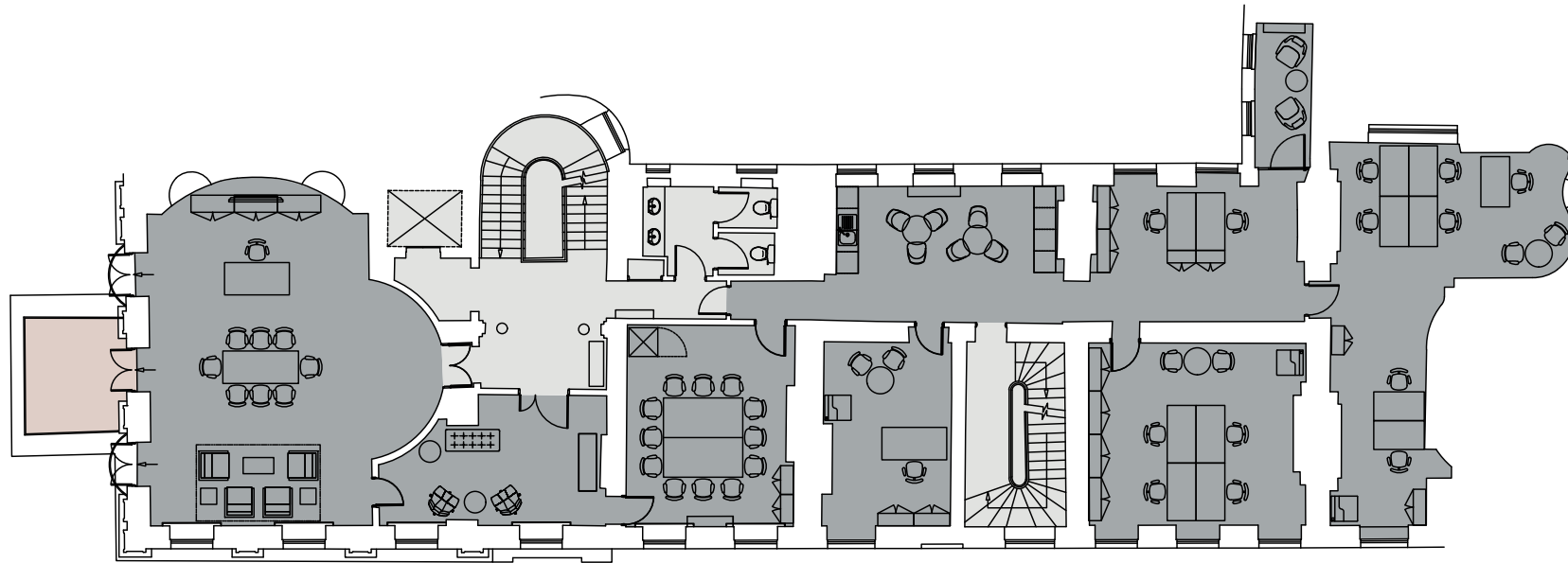


1st Floor Indicative Fit-out

2,759 sq ft / 256 sq m



Robert Street

Open plan desks	13
1 person office	1
Chairman office	1
12 person meeting room	1
Phone booth	1
Waiting area	1
Tea point / breakout area	1

Total occupancy 15

■ Lettable space ■ Terrace ■ Core

For indicative purposes only. Not to scale.

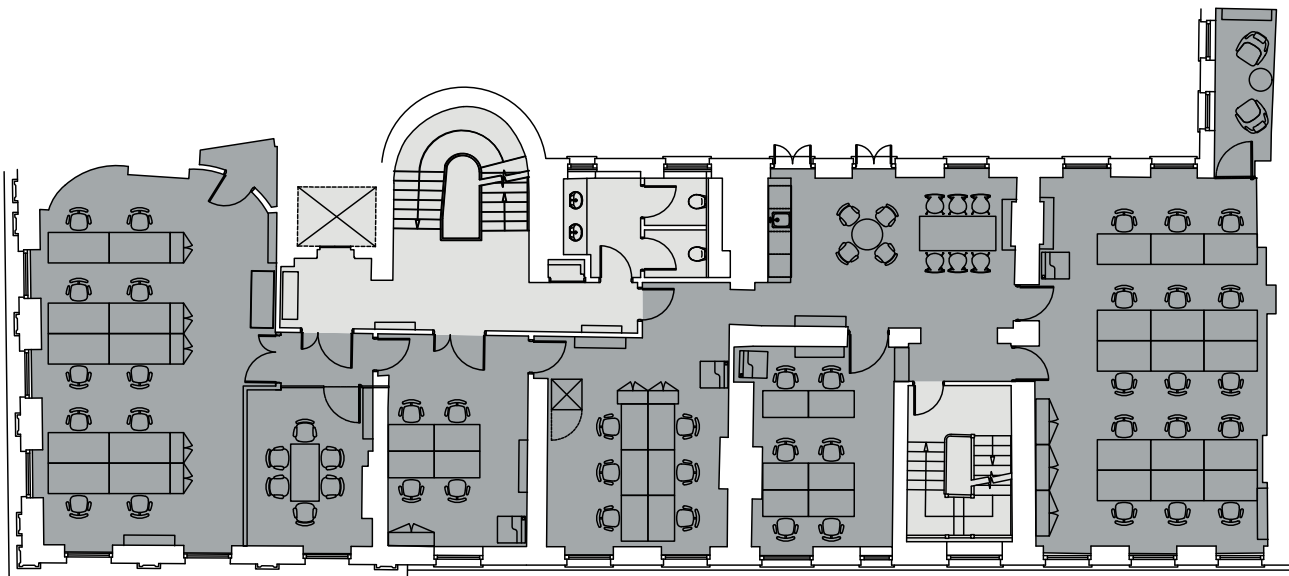


3rd Floor Indicative Fit-out

2,563 sq ft / 238 sq m

Open plan desks	41
6 person meeting room	1
Phone booth	1
Tea point / breakout area	1

Total occupancy 41



Robert Street

■ Lettable space ■ Core

For indicative purposes only. Not to scale.

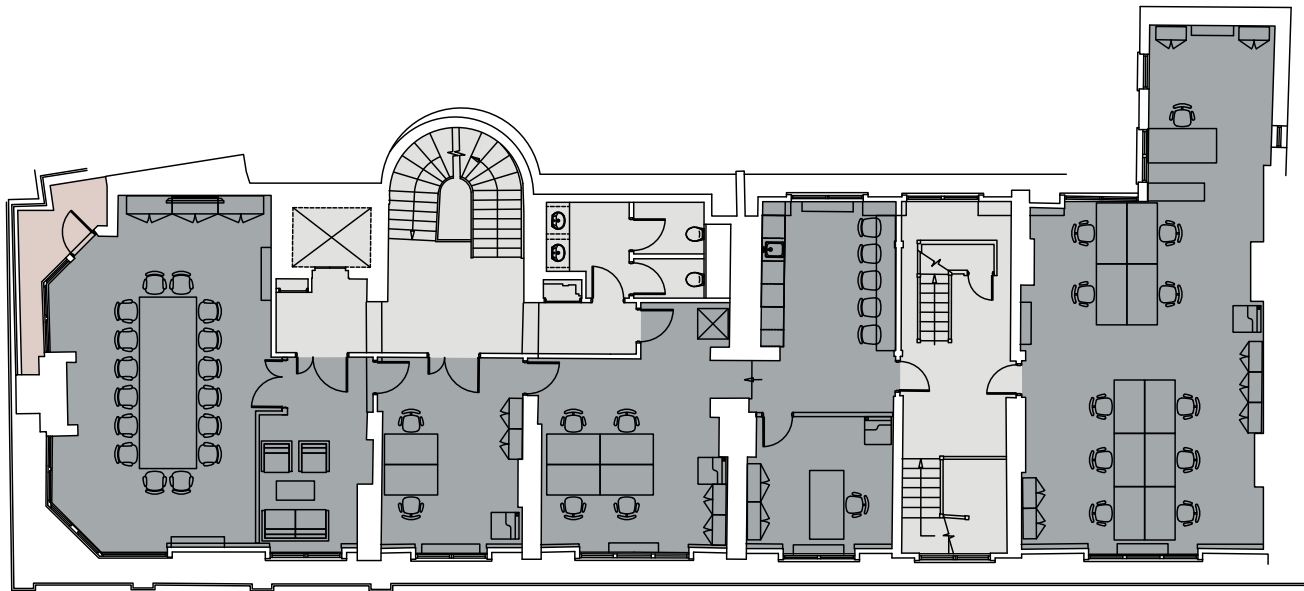


4th Floor Indicative Fit-out

2,224 sq ft / 207 sq m

Open plan desks	17
1 person office	1
16 person meeting room	1
Tea point / breakout area	1

Total occupancy 18



Robert Street

■ Lettable space ■ Terrace ■ Core

For indicative purposes only. Not to scale.

